



Siege Social/Head Office
7077 Ave. du Parc, suite 600
Montreal, Quebec
H3N 1X7

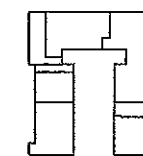
Tel: 514-270-7000
Fax: 514-270-6423
www.rosdev.com

rosdev

IMMOBILIER/PROPERTY :

HYMUS DEVELOPMENTS
375 - 451 Lebeau.
V.S.L - Qc
H4N 1S2

PLAN CLE/PLAN KEY:



BOULEVARD LEBEAU

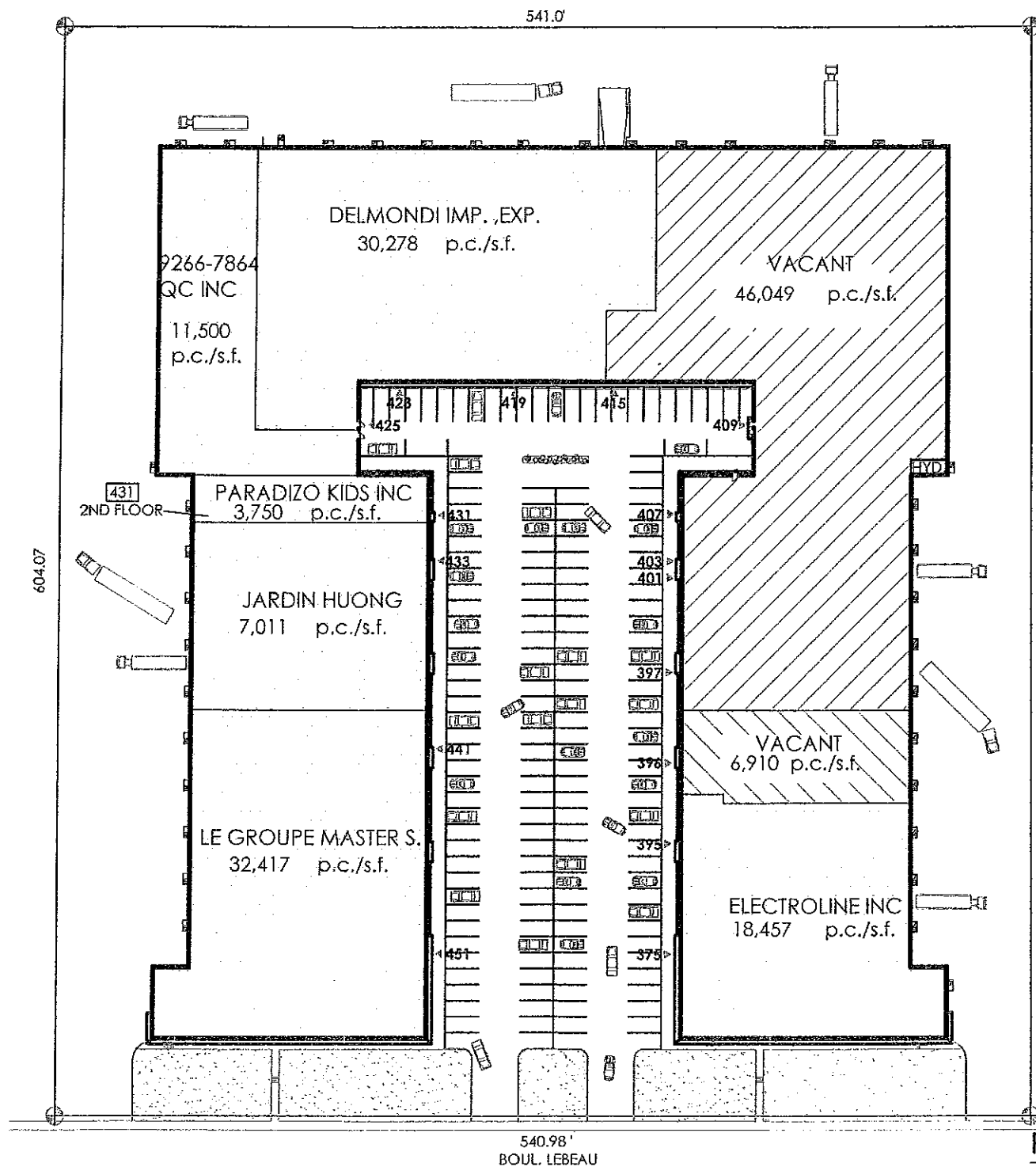
LOCATAIRE/TENANTS:

395	ELECTROLINE INC
395A	VACANT
397-415	VACANT
419-425	DELMONDI IMP., EXP.
427	9266-7864 QC INC
431	PARADIZO KIDS INC
433	JARDIN HUONG
435-451	LE GROUPE MASTER S.

TITRE/TITLE:

PLAN DU SITE

Dossier:	Des.par/Dwg. by:	Des.#/Dwg#:
	T.M.	00
Date:	Scale/Echelle:	
OCT., 10, 2014	N/A	



PLAN DU SITE

